

Doc Type	FREQUENTLY ASKED QUESTION
Doc Id	FAQ15323
Last Modified Date	01/24/2020

Unable to import Modern application aaPKG - Invalid Application folder or file. Please try again.

SR NUMBER

10419258

ANSWER

ISSUE: You can create and export a Modern application, but cannot import from a Modern application package file (aaPKG).

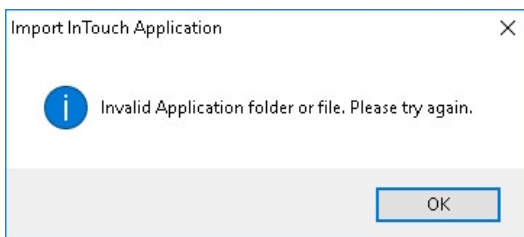


Figure 1: Invalid Application folder or file. Please try again.

Logger Info messages: "CommonControls Failed to extract the Cab file \path\673.InTouch.txt"

CommonControls Uninitialize: The process cannot access the file '673.InTouch.txt' because it is being used by another process."

RESPONSE: Make sure the InTouch INI file is named **INTOUCH.INI** (all capital letters including the extension). You can examine the aaPKG file with a utility like 7zip (Figure 1 below).

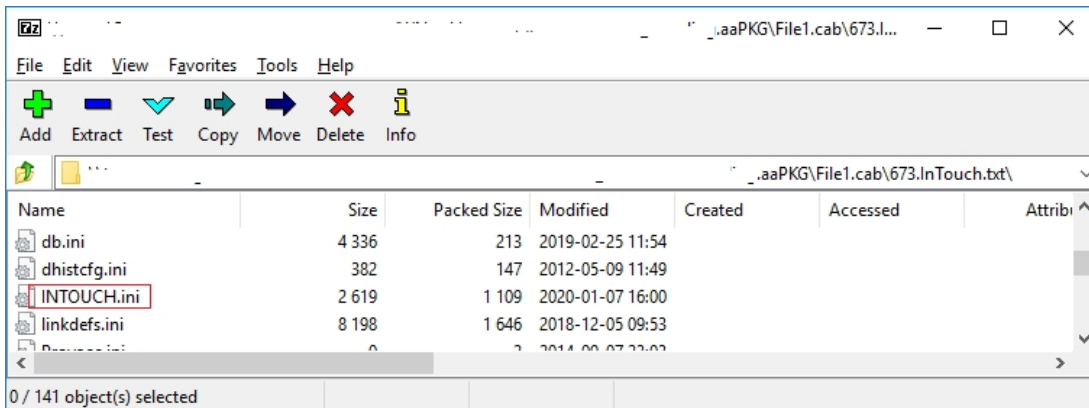


Figure 2: Examining the aaPKG content using 7zip

Note: In Tech Support testing, it was possible to rename the file within the aaPKG using 7zip. The modern app import was successful after the file rename.

Another option would be to rename the file at the "source" development machine, then reexport the aaPKG.